

2024 Official Guide

ROCK COUNTY TOURISM COUNCIL

ROCK COUNTY



Wisconsin's Front Porch



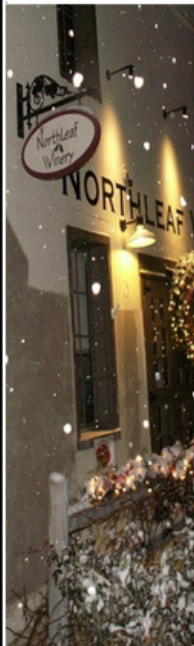
VISIT US AT [ROCKCOUNTY.ORG](https://www.rockcounty.org)

232 SOUTH JANESVILLE STREET MILTON WISCONSIN 53563 ~ 608-580-0575 ~ WWW.NORTHLEAFWINERY.COM



Northleaf Winery

WINERY, TAPROOM, EVENT SPACE & DECK



WELCOME!

MON-SAT 11-7 MUSIC ON FRI @ 6:30 SUN 11-5

The Milton House

18 S Janesville St, Milton, WI
608-868-7772

Call ahead to schedule your tour.



**WISCONSIN'S LAST AUTHENTICATED
UNDERGROUND RAILROAD STATION**

Summer Hours: June 12th thru September 4th ~ Walk in tours welcome ~ Tues thru Sunday 10am - 4pm

Winter Hours: September 5th thru June 12th ~ Tours by appointment ~ Weds, Thurs 10am - 2pm, Fri 10am - 1pm

Visit us online for a sample tour video, our event listing, photos, and more.

Milton House Museum MiltonHouse.org MiltonHouseMuseum



Visit us at RockCounty.org

rockcounty.org

Goodrich Antiques & Vintage Uniques

742 E Madison Ave. Milton, WI
608-868-3651
Ask about our Guest Inn

Home Decor ~ Collectibles ~ Furniture



Hours: Fri & Sat 10am - 5pm &
Sun 12pm - 5pm

Red Rooster



Home Furnishings & Gifts

Peddlers

Loft & Cellar

40+ Vendors



OLD JUNCTION MILL

613 W. Madison Ave.
Milton, WI
608-868-5555
oldjunctionmill.com

Hours:
Tues-Sat 10-5
Sun 12-4

Join us on [redroostermilton](https://www.facebook.com/redroostermilton)

2024 Rock County Guide

Table of Contents:

Ongoing Events Calendar.....2
 2024 Events Calendar.....3
 Fall Attractions.....5
 Winter Wonderland.....5
 County Parks & Trails Listing.....6
 Rock County Parks Map.....7
 Water Access Points Maps.....8
 Rock County Trails Map.....9
Community Pages
 Cooksville, Clinton, Town of Beloit.....10
 Orfordville.....10
 Beloit.....11
 Edgerton.....12
 Evansville.....13
 Janesville.....14
 Milton.....15
 Sample Itineraries.....16
 Accommodations.....17
 Entertainment.....17



Rock County offers something for everyone - welcome to Wisconsin's front porch!

THE GLASS GARDEN LLC
 25 W Milwaukee St Janesville, WI

Stained glass panels, lamps, candleholders, bowls, and fused glassware!
 Supplies & Classes offered, as well.

(608) 754 - 3718 www.eglassgarden.com



See the full interactive guide online at RockCounty.org

MILTON KOA

Family Campground
 872 E Hwy 59
 Milton, WI 53563

- Immaculate bathrooms
- RV, Tent, and camping sites available
- 70' - 100' Drive thru sites with 50 amp power & sewer hookup
- Playground
- 7,500 sq. ft. Clubhouse
- Arcade

To reserve your spot today CALL 800-469-5515



BELOIT

Sky Carp Baseball. April - September. High-A affiliate of the Miami Marlins. ABC Supply Stadium. 217 Shirland Ave, Beloit. MILB.com/Beloit

Beckman Mill Guided Tours. May-October. Every Saturday & Sunday from 1-4pm. Group tours by reservation. 1160 County Highway H, Beloit. BeckmanMill.Org.

Farmers Market. May-October. Every Saturday from 8am-1pm, rain or shine. Award-Winning Market with 100 vendors. State St & Grand Ave in Downtown Beloit. DowntownBeloit.Com.

Fridays in the Park. May-September. Every Friday from 1130am-130pm. Purchase lunch & enjoy live music in the Park in Downtown Beloit. DowntownBeloit.Com

Dancing at Harry's Place. June-August. Every other Monday evening from 7-9pm. Enjoy free dance lessons on the riverfront. Harry Moor Pavilion, Riverside Park, HWwy 51, Beloit. FriendsOfRiverfront.com

Beloit Winter Crafter & Farmers Market. November-April. Every Saturday from 9am-12pm, indoors. Downtown Beloit Association. 557 E Grand Ave, Beloit. DowntownBeloit.com

EDGERTON

Sterling North Museum Tours. Sundays, May-October. Childhood home of the author of children's book and Disney film "Rascal", Sterling North Museum, 409 W Rollin St, sterlingnorthsociety.com

Fall Fun at Hermanson Pumpkin Patch. Mid-September-October. Hermanson Pumpkin Patch, 127 Co Hwy N, (608) 751-9334, hermansompumpkinpatch.com

EVANSVILLE

Evansville Jays Home Talent Baseball Games. May-August, games typically at 7:30pm Thursdays and 1pm Sundays. Home games at Jay's Nest in Leonard Leota Park Upper Baseball Diamond. www.facebook.com/EvansvilleJays

Creekside Place Art Exhibits. Call ahead for hours. Creekside Place Gallery, 102 Maple St, Evansville. 882-0407, info@creeksideplace.org, www.creeksideplace.org

Creekside Cruise Night. First Thursday of May, June, August, September, and second Thursday in July, 5-8pm. Show off your ride with pride! Creekside Place, 102 Maple St, Evansville. 882-0407, www.facebook.com/creeksidecruise, www.creeksideplace.org

Eager Economy Building Micro-Museum (lower level) offers a glimpse of Evansville's agriculture history. The historic building also is home to two towering examples of restored Baker-Monitor windmills. 7 E Main St, Evansville.

Evansville Underground Music Year round; weekly/biweekly May-September. Up-and coming regional artists perform on neighborhood porches, backyards, and indoor venues. Donations suggested. www.facebook.com/groups/2442819112656816

Farmers Market Sundays, July-September, 11:30am-2pm. Enjoy local food, crafts, and other handmade treasures at Evansville's own Just Beyond The Willow Coffeeshop. See Facebook page for official start date as event nears. Just Beyond The Willow, 510 S Madison St, Evansville. 882-4039, beyondwillow@gmail.com, www.facebook.com/marketatthewillow

Grove Society Local History Museum Open 1-3pm on Saturdays, June-September. Exhibits feature Evansville history, housed in the historic Baker Manufacturing Office Building, 15 Antes Dr. On the museum grounds is the last tourist cabin from Lake Leota Park, restored to its 1936 appearance. For details: www.facebook.com/EvansvilleGroveSociety, www.GroveSociety.org

Historic District Walking Tour. Four historic districts include the second oldest nationally designated district in the state. Self-guided walking tours. Follow maps in the free Walker's Guide tour book. Copies are available at Creekside Place, City Hall, Chamber, Eager Free Public Library, and the local History Museum.

Residential Barn Quilt Tour. 80-plus Barn Quilts, the highest concentration of residential and community Barn Quilts in Rock County. Free brochure and map available at Creekside Place, Chamber, City Hall, and Eager Free Public Library. A link to an online version is at www.ci.evansville.wi.gov/experience-evansville/

Genealogy Group Sponsored by the Evansville Grove Society meets on the third Thursday of each month at Creekside Place, 102 Maple Street, Evansville, WI year round. We welcome new members who are beginning, intermediate or accomplished researchers. Bring your questions, suggestions and answers to the meeting. For further information on the group, email grovesociety1@gmail.com.

MILTON

Live Music at Northleaf Winery. 3rd Friday thru April. 232 S Janesville St, (608) 580-0575, northleafwinery.com

Live Music at Northleaf Winery. Fridays Memorial Day - Labor Day. 232 S Janesville St, (608) 580-0575, northleafwinery.com

Milton House Tours. Jun 11-Aug 24. 1844 Stagecoach Inn - part of the Underground Railroad. Milton House Museum, 18 S Janesville St, (608) 868-7772, miltonhouse.org

Concerts on the Lawn. Summer. The Gathering Place, 715 Campus St

Community Days. Summer. Goodrich Square, 400 Parkview Dr

JANESVILLE

Library Art Exhibit. Ongoing. Hedberg Public Library, 316 S Main St, (608) 758-6600, hedbergpubliclibrary.org

Winter Farmers Market. 1st Saturdays January - April, 1st & 3rd Saturdays November - December. Uptown Janesville (Janesville Mall), 2500 Milton Ave, (608) 289-9292, janessvillefarmersmarket.com

Hedberg Harmony: Southern WI Dulcimer Club. 2nd Saturdays. Hedberg Public Library, 316 S Main St, (608) 758-6600, hedbergpubliclibrary.org

Uke Circle, Knapton Musik Knots. 2nd Saturdays. 2475 Milton Ave, (608) 758-8660, knaptonmusiknotes.com

Uptown Mega Market. 3rd Friday, Saturday & Sunday, January - April. Uptown Janesville (Janesville Mall), 2500 Milton Ave.

Hedberg Harmony: Rock River String Band. 4th Fridays. Hedberg Public Library, 316 S Main St, (608) 758-6600, hedbergpubliclibrary.org

Janesville Jets Hockey. Select weekends September - April. Janesville Ice Arena, 821 Beloit Ave, (608) 752-5387, janessvillejets.com

Winter StoryWalk®. January 1 - March 19. Children's book laid out along the trail, Robert O. Cook Memorial Arboretum/JSOL, 3550 W Cty Hwy A, (608) 755-3030

City Dreams Winter Art Exhibit. January 9 - March 3. Janesville Performing Arts Center, 408 S Main St, janessvilleartleague.org

Comedy Cabin. Year round live comedians. 120 N Crosby Ave Suite 4. cabinlaughs.com

Lincoln-Tallman Museum Tours. Jan 11 - April Thurs - Sat; May - October Wed - Sat; or by appointment. Tour this beautiful Italianate-style home built in the 1850s, Rock County Historical Society, 426 N Jackson St, (608) 756-4509, www.rchs.us

Rock County Legacies. Wednesday - Saturday. Rock County Legacies, Rock County Historical Society, 426 N Jackson St, (608) 756-4509, www.rchs.us

Birds and Blooms Spring Art Exhibit. March 4 - April 7. Janesville Performing Arts Center, 408 S Main St, janessvilleartleague.org

Spring StoryWalk®. March 19 - June 19. Children's book laid out along the trail, Robert O. Cook Memorial Arboretum/JSOL, 3550 W Cty Hwy A, (608) 755-3030

Janesville Farmers Market. Saturdays. May - October. Market, Janesville Town Square, 21 Dodge St, (608) 289-9292, janessvillefarmersmarket.com

Garden Art Exhibit. Mid-May thru mid-September. Garden Art Exhibit, Rotary Botanical Gardens, (608) 752-3885, rotarybotanicalgardens.org

Rock Aqua Jays Water Ski Show. Wednesdays & Sundays, Memorial Day weekend - Labor Day. National Champion team. Traxler Park, 600 N Main St, rockaquajays.com

Music at the Marv. Tuesdays, June-August. Free concert series featuring local and regional acts in a variety of genres, Marvin W Roth Community Pavilion at Courthouse Park, 51 S Main St, (608) 755-3030, downtownjanesville.com

Summer StoryWalk®. June 20 - September 21. Children's book laid out along the trail, Robert O. Cook Memorial Arboretum/JSOL, 3550 W Cty Hwy A, (608) 755-3030

Skelly's Sunflower Experience. Mid July thru mid-August. Five acres of sunflowers, with viewing platforms and Prop Stops for cute photos, Skelly's Farm Market, 2713 S Hayner Rd, (608) 757-1200, skellysfarmmarket.com

Skelly's Corn Maze & Fall Festival. August 31 - October 31. Two corn mazes with GPS enabled map for your smartphone; many family-friendly activities plus retail store and bakery, Skelly's Farm Market, 2713 S Hayner Rd, (608) 757-1200, skellysfarmmarket.com

Fall StoryWalk®. September 22 - December 20. Children's book laid out along the trail, Robert O. Cook Memorial Arboretum/JSOL, 3550 W Cty Hwy A, (608) 755-3030

Forest of Freaks. Weekends in October. The Edge Paintball & Airsoft, 5946 US-51, wescaredyou.com

Holiday Art Show & Sale. November 19 - December 31. Janesville Performing Arts Center, 408 S Main St, janessvilleartleague.org

Holiday Light Show. November 29 - December 30. Stroll through a winter wonderland of over 1.5 million twinkling lights in this fun family activity, Rotary Botanical Gardens, (608) 752-3885, rotarybotanicalgardens.org

Holiday Tree Show. November 29 - December 30. More than 100 trees and decorations throughout the Lincoln-Tallman House, each beautifully adorned, Rock County Historical Society, 440 N Jackson St, (608) 756-4509, www.rchs.us

Movies in the Park. 3rd Fri - June - August. Optimist Park, 4201 Ruger Ave, Janesville, (608) 755-3030

Wisconsin Historical Society Traveling Exhibit. Throughout March. Rock County Historical Society, 426 N Jackson St, Janesville, (608) 756-4509, www.rchs.us

January**4,5,20 - Janesville Jets Hockey**

Janesville Ice Arena ~ 821 Beloit Ave in Janesville. janesvillejets.com

4 Late Night at Comedy Cabin. Comedy Cabin, 120 N Crosby Ave, Janesville, cabinlaughs.com

5 Improv Night with Steadily Improving. Janesville Performing Arts Center, 408 S Main St, (608) 758-0297, janesvillepac.org

5 Candlelight Hike at Janesville School Outdoor Lab. Hosted by Janesville School District & Ice Age Trail Alliance / Rock County Chapter. 3570 County Road A, Janesville. iceagetrail.org

6 Rock County Arts Hall of Fame. Janesville Performing Arts Center, 408 S Main St, (608) 758-0297, janesvillepac.org

11 City Dreams Opening Reception. Janesville Performing Arts Center, 408 S Main St, Janesville janesvilleartleague.org

14 Rock County Mega Sale. Indoor flea market, Rock County Fairgrounds, 1301 Craig Ave, Janesville

14 Show Me Reptile Show. Holiday Inn Express / Janesville Conference Center, 3100 Wellington Pl, showmesnakes.com

19 Beach Party at Northleaf Winery. Bahama Bob live. 232 S Janesville St, Milton. Northleafwinery.com

19, 20 Evansville Jays 18th Annual Strike Out for Baseball Bowling Fundraiser. Proceeds support local amateur baseball. Blue Devil Bowl, 108 E Main St, Evansville. (608) 575-4359, www.facebook.com/EvansvilleJays

20 Comedy on Main. Janesville Performing Arts Center, 408 S Main St, janesvillepac.org

20 Candlelight Hike at Beckman Mill County Park. Hosted by Friends of Rock County Parks. 11600 S County Rd H, Beloit.

24 Maple Sugar Fest 8am-12pm. Welty Environmental Center. 1201 Big Hill Ct. weltycenter.org

25-28 Steel Magnolias. Parker High School, 3125 Mineral Point Ave, Janesville, (608) 743-5591, parker-arts.com

26, 27, 28 9 to 5 the Musical. Janesville Performing Arts Center, 408 S Main St, (608) 758-0297, janesvillepac.org

26-28 Beloit Winterfest. Indoor & outdoor festivities. beloitrecreation.com/Beloit-Winterfest

27 Candlelight Hike at Storrs Lake Wildlife Area hosted by Ice Age Trail Alliance / Rock County Chapter. E Storrs Lake Rd, Milton.

28 Badgerland Frag Swap 2024. Saltwater aquariums collectors and vendors, Holiday Inn Express / Janesville Conference Center, 3100 Wellington Pl, (608) 554-3473

31 Books and Brews Trivia Night. Rock County Brewing Company, 10 N Parker Dr, Janesville, hedbergpubliclibrary.org

February

1 Late Night at Comedy Cabin. Comedy Cabin, 120 N Crosby Ave, Janesville, cabinlaughs.com

2, 3, 4 9 to 5 the Musical. Janesville Performing Arts Center, 408 S Main St, (608) 758-0297, janesvillepac.org

2,3,16,17 - Janesville Jets Hockey Janesville Ice Arena . 821 Beloit Ave in Janesville - janesvillejets.com

7 Live at the Venue: The CarTunes Band. The Venue, 37 S Water St, Janesville, (608) 373-9727, thevenuejanesville.com

9,10 6th Annual 8 Pin Bowling Tap Tournament - Chamber event open to everyone. Blue Devil Bowl, 108 E Main St, Evansville. 882-5131, facebook.com/evansvilleecoc

9,10,11, 14 Wine & Chocolate Obsession. Northleaf Winery. \$20/person. Wine & chocolate pairings. 232 S Janesville St, Milton. northleafwinery.com

9, 10, 16,17 Terms of Endearment. Janesville Performing Arts Center, 408 S Main St, (608) 758-0297, janesvillepac.org

10 Chocolate Extravaganza - Admission fee. Creekside Place, 102 Maple St, Evansville. 882-0407, info@creeksideplace.org, facebook.com/CreeksidePlaceInc, creeksideplace.org

10 Candlelight Hike at Rockport Park hosted by Friends of Rockport Park. 2801 W Rockport Rd, Janesville.

10 Bravo Amici. Combining pop, Broadway, the West End and opera. Edgerton Performing Arts Center, 200 Elm High Dr. (608) 561-6093, edgertonpac.com

10 Janesville Stamp Club Exhibition. Holiday Inn Express / Janesville Conference Center, 3100 Wellington Pl, (608) 756-9661, wfscstamps.org

10 Superski/Hike. Rockport Park, Rockport Park, 2801 Rockport Rd, Janesville, janesvillewi.gov

10 Rock County Mega Sale. Indoor flea market, RC Fairgrounds, 1301 Craig Ave, Janesville

11 Souper Bowl To-Go. 11am-1pm. Pre-order Super Bowl food and beverage favorites, and pick them up just in time for a party. Creekside Place, 102 Maple St, Evansville. 882- 0407. info@creeksideplace.org, creeksideplace.org, facebook.com/CreeksidePlaceInc

24 Candlelight Hike at Rock River Heritage County Park. Hosted by Rock River Heritage Park Friends. 5801 N River Rd, Janesville.

24 Comedy on Main. Janesville Performing Arts Center, 408 S Main St, (608) 758-0297, janesvillepac.org

24 Flannelfest. Craft Beer Experience Outdoor festival with 40+ craft beers and 50+ home brew beers, unlimited game play, and a commemorative tasting mug, Janesville Town Square, 15 Dodge St, (608) 728-3322, downtownjanesville.com

28 Ben Miller's Stand-Up Science. Comedy Cabin, 120 N Crosby Ave, Janesville, cabinlaughs.com

29 Annual Downtown Beloit Association Dinner. 530pm - 8pm. Celebrate 2023 accomplishments & award businesses & individuals who make downtown a better place to live, work, shop, eat and play! downtownbeloit.com

March

1, 2 Vintage Shop Hop Vintage, handmade and repurposed treasures at Evansville Main St proprietors. www.vintageshophop.blogspot.com, facebook.com/VintageShopHop

2 Spring Fling Vendor Expo. Rock County Fairgrounds, 1301 Craig Ave, Janesville

2, 3 Show Me Reptile Show. Holiday Inn Express / Janesville Conference Center, 3100 Wellington Pl, Janesville. showmesnakes.com

2,15,16,22,23 - Janesville Jets Hockey Janesville Ice Arena. 821 Beloit Ave in Janesville. janesvillejets.com

3 FFA Farm Toy Show \$3 admission fee for ages 11+. 9am-2pm, Evansville School District Field House, 320 Fair St. 882-4125, facebook.com/evansville.wi.ffa.alumni

6 Birds and Blooms Opening Reception. Janesville Performing Arts Center, 408 S Main St, janesvilleartleague.org

6 Live at the Venue: Bootjack Road. The Venue, 37 S Water St, Janesville, (608) 373-9727, thevenuejanesville.com

7 Late Night at Comedy Cabin. Comedy Cabin 120 N Crosby Ave, Janesville, cabinlaughs.com

9 Rock County Mega Sale. Indoor flea market, Rock County Fairgrounds, 1301 Craig Ave, Janesville

15 St Patrick's Day Limerick Contest. Evan Riley Band. 630-930pm. Northleaf Winery, 232 S Janesville St, Milton, (608) 580-0575, northleafwinery.com

16 Eaglemania. World's Greatest Tribute To The Eagles, Edgerton Performing Arts Center, 200 Elm High Dr, (608) 561-6093, edgertonpac.com

16, 17 Rock, Gem & Mineral Show. Rock County Fairgrounds, 1301 Craig Ave, Janesville, (608) 935-0597, badgerrockclub.org

16, 20 RCHS Quilt & Textiles Show. Rock County Historical Society, 426 N Jackson St, Janesville, (608) 756-4509, www.rchs.us

22, 24 Badger Knife Show. Holiday Inn Express / Janesville Conference Center, 3100 Wellington Place, (414) 479-9765, badgerknifeclub.com

30 Downtown Beloit Association Easter Eggstravaganza at Beloit Farmers Market. 557 E Grand Ave Beloit. downtownbeloit.com

April

3 Live at the Venue: That Gurl. The Venue, 37 S Water St, Janesville, (608) 373-9727, thevenuejanesville.com

5-14 Beloit International Film Festival (BIFF). Downtown venues. Times vary. 608-313-1200, beloitfilmfest.org

12-14, 19-21 Shrek the Musical. Parker High School, 3125 Mineral Point Ave, Janesville, (608) 743-5591, parker-arts.com

12-14 Tales of Our Heritage. Stories of 5 diverse groups that settled in Rock County, Janesville Performing Arts Center, 408 S Main St, (608) 758-0297, janesvillepac.org

13 Rock County Mega Sale. Indoor flea market, Rock County Fairgrounds, 1301 Craig Ave, Janesville

19-21 Shrek The Musical. 7:30pm Friday, 2pm & 7:30pm Saturday, 2pm Sunday. Admission fee. High School Performing Arts Center, 640 S Fifth St, Evansville. sites.google.com/ecsnet.org/evansvillehsdrama/musical

19-21, 26-28 Early One Evening At the Rainbow Bar and Grille. Janesville Performing Arts Center, 408 S Main St, (608) 758-0297, janesvillepac.org

19 Brian Matteson live at Northleaf Winery. Northleaf Winery, 232 S Janesville St, Milton, (608) 580-0575, northleafwinery.com

20 Spring Wine Walk. Sip, stroll, shop in downtown Beloit. downtownbeloit.com

27 Witchcraft and Wizardry Experience. Magical murder mystery, Downtown Janesville, cluedupp.com

27 Spring Fling Market Craft & Vendor Fair. Chapel Specialties on the Square, 880 McEwan Ln, Milton, (608) 201-8217

May

1 Live at the Venue: Sunset Strip. The Venue, 37 S Water St, Janesville, (608) 373-9727, thevenuejanesville.com

4 Orfordville Rummage Sale Day. Village wide rummage sales. orfordville.org

4 Good Vibrations Tribute to the Beach Boys. Edgerton Performing Arts Center, 200 Elm High Dr, (608) 561-6093, edgertonpac.com

4 Rock County Mega Sale. Indoor flea market, Rock County Fairgrounds, 1301 Craig Ave, Janesville

4 Beckman Mill Opening Day Celebration. 12-4pm. Friends of Beckman Mill. beckmanmill.org (608) 751-1551

- 10 Art Crawl.** Evansville Main Street shops host up to 30 artists. Refreshments & entertainment. facebook.com/EvansvilleArtCrawl
- 11 Orfordville Market Day.** 9am-11am - 304 E Beloit St Orfordville. facebook.com/OrfordvilleMarketDays
- 18 Beckman Mill Bike Ride.** Starts & ends at Beckman Mill. 7am-2pm. beckmanmill.org
- 18 Downtown Wine Walk.** Downtown Janesville - Town Square, 69 S River St, (608) 728-3322, janesvillewinewalk.com
- 18,19 Janesville Renaissance Fair.** Five stages of unique entertainment, over 45 merchants selling handmade goods, and family fun in an immersive, historically themed event. Traxler Park, 600 N Main St, (608) 289-0699, jvrenfaire.com
- 18,19 Civil War Living History Days.** Mingle with Civil War era reenactors, see artillery, infantry and medical demonstrations, and rub elbows with President Abraham Lincoln, Milton House Museum & North Goodrich Park, 18 S Janesville St, Milton, (608) 868-7772, miltonhouse.org
- 19 Show Me Reptile Show.** Holiday Inn Express / Janesville Conference Center, 3100 Wellington Pl, showmesnakes.com
- 24 Annual Wine Walk & Garden Party.** Northleaf Winery. 630-930pm. Music by Van Dwellers. 232 S Janesville St, Milton. northleafwinery.com
- 27 Memorial Day Parade & Ceremony.** Downtown Janesville, Main St & Milwaukee St
- 27 Memorial Day Recognition.** Parade & Rally in the Alley. 179 E Main St, Evansville.
- 27 Memorial Day Parade.** Beloit/ South Beloit parade organized by the United Veteran's Memorial Day Parade Committee. visitbeloit.com/calendar
- 31 Grapes & Hops.** Southern Wisconsin Regional Airport - Revv Aviation Hangar, 4606 S Atlantis Dr, Janesville, (608) 755-4123, kanduindustries.com
- June**
- 1 Grove Society Museum.** Season opening for museum and Antes Cabin. 1-4pm Saturdays. June - September. 15 Antes Dr, Evansville. facebook.com/EvansvilleGroveSociety
- 1 Rock County Mega Sale.** Indoor flea market, Rock County Fairgrounds, 1301 Craig Ave
- 7-9 June Days.** 100 W Church St, Orfordville. Live music, games, and more. facebook.com/OrfordvilleCommunityJuneDays
- 9 Market Day.** 12-5pm. 100 W Church St, Orfordville. facebook.com/OrfordvilleMarketDays
- 8 Rock County Dairy Breakfast.** Morton Dairy Farm, 15739 W State Road 59, Evansville, (608) 290-4921
- 8 IMPACT Pride Convention.** Holiday Inn Express / Janesville Conference Center, 3100 Wellington Pl, janesvillepride.com
- 9 Sawdust and Iron Country Markets.** Clinton, WI. Downtown. clintonwi.us
- 13, 20, 27 Kids Noontime Entertainment.** Palmer Park, 2501 Palmer Dr, Janesville, (608) 755-3030
- 13 Tour of America's Dairyland.** Janesville Town Square Gran Prix Kickoff the Tour of America's Dairyland Series, eleven days of exciting bicycle criterium racing, Downtown Janesville, (608) 757-3171, janesvilletownsquaregranprix.com
- 15 Juneteenth Celebrations.** visitbeloit.com/calendar
- 15 Janesville Morning Rotary Pie Ride Bicycling event** featuring 5K, 20K, 50K and 100K routes, Town Square, 69 S River St, pieride.org
- 16 Vintage Car Show.** Rock County Historical Society, 426 N Jackson St, Janesville, (608) 756-4509, www.rehs.us
- 20 On the Green Golf Outing.** Glen Erin Golf Club, 1417 W Airport Rd, Janesville. namirockcounty.org
- 21 Evansville Annual Chamber of Commerce Golf Outing.** All welcome to play. Evansville Golf Club, 8501 N Cemetery Rd, Evansville. 882-5131. facebook.com/EvansvilleCOC
- 22 Mercury Open Water Ski Show Tournament.** Traxler Park, 600 N Main St, Janesville
- 22 Milton Mega Market.** Chapel Specialties on the Square, 880 McEwan Ln, (608) 201-8217
- 27-30 JPAC's Outdoor Shakespeare: Romeo and Juliet.** Rock County Historical Society, 426 N Jackson St, Janesville, (608) 758-0297, janesvillepac.org
- 28 Scentsation: Flower Power.** Edgerton Hospital, 11101 N Sherman Rd, (608) 884-3441, edgertonhospital.com
- 28-29 Pajama Party by JPAC Kids.** Janesville Performing Arts Center, 408 S Main St, (608) 758-0297, janesvillepac.org
- 29 Star Spangled Saturday Live.** Music, a beer tent, food trucks, a performance by the Rock Aqua Jays waterski show team, and fantastic fireworks sponsored by Festival Foods, Traxler Park, 600 N Main St, Janesville, festfoods.com
- 28 Ice Cream Social.** Sponsored by the Friends of the Eager Free Public Library. Time TBD. Emma's Table, 104 W Main St, Evansville. 882-2260. facebook.com/friendsofEFPL
- July**
- 4 Rhythm & Booms 4th of July Festival.** Schilberg Park, 301 W High St, Milton
- 4 Milton 4th of July Parade.** Madison Ave
- 4 4th of July Concert & Fireworks.** Beloit. visitbeloit.com/calendar
- 4 Evansville 4th of July Fun Run/ Walk.** 730am Leonard-Leota Park. 10k/5k/1Mile run-walk. Register at runsignup.com/Race/WI/Evansville/Evansville4thofJulyRunWalk
- 6 Sip & Shop Market Craft Fair.** Fermenting Cellars Winery, 2004 W Manogue Rd, Janesville, (608) 201-8217
- 11 Kids Noontime Entertainment.** Palmer Park, 2501 Palmer Dr, Janesville, (608) 755-3030
- 14 Show Me Reptile Show.** Holiday Inn Express / Janesville Conference Center, 3100 Wellington Pl, Janesville. showmesnakes.com
- 19-21 Tobacco Heritage Days.** Live music, the Rascal Run 5k run/walk and 1 mile run/walk, and activities for the whole family, Downtown & Racetrack Park, Edgerton, (608) 751-2258, edgertonontobaccodays.com
- 19 Static Air and Car Show Movie Night.** Southern Wisconsin Regional Airport, 4004 S Oakhill Ave, Janesville
- 20 Edgerton Pottery Festival.** Racetrack Park, 900 Stoughton Rd, Edgerton. artscouncilledgerton.com
- 20 Stroll Through Arts in the Park.** Albion Park, 612 Campus Ln, Edgerton
- 20 Pistons & Props Air & Car Show.** Static show with displays and activities, Southern Wisconsin Regional Airport, 4004 S Oakhill Ave, Janesville
- 21 Ice Cream Social.** Friends of Beckman Mill Park. Beckman Mill Park. 11600 S Cty Rd H, Beloit. beckmanmill.org
- 23-28 Rock County 4-H Fair.** Rock County Fairgrounds, 1301 Craig Ave, Janesville, (608) 755-1470, rockcounty4hfair.com
- 28 Winery Art Walk.** Fermenting Cellars Winery, 2004 Manogue Rd, Janesville
- August**
- 1-3 Summer Used Book Sale and Donation Days.** Thurs 12-5pm, Fri 9am-5pm, Sat 9am-12pm. Grange Mall (lower level), 19 W Main St, Evansville.
- 2 Street Dance.** Downtown Beloit. Live music. 530pm-11pm. downtownbeloit.com
- 2,3 Evansville City Wide Garage Sales.**
- 3, 4 Tallman Arts Festival.** Rock County Historical Society, 426 N Jackson St, Janesville, (608) 756-4509, rehs.us
- 15 Night on Festival.** Food trucks, live music and yard games, Janesville Town Square, 15 Dodge St, (608) 728-3322, downtownjanesville.com
- 17 Beloit Dirty Dash.** Ages 4-18. beloitrecreation.com/dirty-dash/
- 17 Rock County Mega Sale.** Indoor flea market, Rock County Fairgrounds, 1301 Craig Ave, Janesville
- 17 Milton Mega Market.** Chapel Specialties on the Square, 880 McEwan Ln, Milton (608) 201-8217
- 18 MACC Pork Roast & Milton Makers Market.** North Goodrich Park, 20 Parkview Dr Milton.
- 24 Vino & Vendors Market.** Fermenting Cellars Winery, 2004 W Manogue Rd, Janesville. (608) 201-8217
- 30 - Sep 2 Rock River Thresheree.** Living history festival with working antique steam engines and equipment demonstrations, military displays, kids activities, Thresherman's Park, 51 E Cox Rd, Edgerton, (608) 868-2814, thresheree.com
- September**
- 6, 7 Chilimania & Country Edge Concert.** Downtown Edgerton, 99 N Henry St, (608) 561-7566, chilimania.com
- 6-8 Art Infusion.** Sidewalk chalk art competition with large scale painted wall murals, Downtown Janesville, (608) 757-3171
- 7 Downtown Sidewalk Sale.** Downtown Janesville, downtownjanesville.com
- 8 Heritage Sunday at Beckman Mill.** beckmanmill.org
- 14 Airing of the Quilts.** Quilts displayed throughout Orfordville, live demonstrations. sassyfarmchicks.com,
- 14 Orfordville Market Day.** 100 W Church St, Orfordville. Various vendors 9am-3pm. facebook.com/OrfordvilleMarketDays
- 15 Beloit Autorama.** Preservation Park, 3444 S Riverside Dr, Beloit. beloitautorama.com
- 21 Rock County Mega Sale.** Indoor flea market, Rock County Fairgrounds, 1301 Craig Ave, Janesville
- 21 CreekFest.** Live music, food, art. 2-9pm. Creekside Place, 102 Maple St, Evansville. creeksideplace.org
- 21 Oktoberfest.** Beloit fundraiser event for historic downtown district. 530-11pm. 300 block of State St, Beloit. downtownbeloit.com
- 21 Twilight Tours & Tastings.** Milton House Museum. 7pm. Tours, chocolates, wine. Milton House 18 S Janesville St, Milton. northleafwinery.com
- 28 Downtown Wine Walk.** Downtown Janesville - Town Square, 69 S River St, (608) 728-3322, janesvillewinewalk.com
- October**
- 4,5 Vintage Shop Hop.** Vintage, handmade and repurposed treasures at Evansville Main St proprietors. facebook.com/VintageShopHop
- 5 House of Mercy Charity Ball.** Celtic House - Glen Erin Golf Club, 1417 W Airport Rd, Janesville, (608) 741-2422
- 5 NAMI Walks.** Janesville, (608) 743-9829, namirockcounty.org
- 5 Rock County Mega Sale.** Indoor flea market, Rock County Fairgrounds, 1301 Craig Ave, Janesville
- 6 Fall Fest at Carver-Roehl Park.** 1130am-230pm. 4907 S Carvers Rock Rd, Clinton.
- 9-12 Enchanted Forest & Hollywood Hayride.** Palmer Park, 2501 Palmer Dr, Janesville, (608) 755-3030

10-13, 18-20 AAUW Used Book Sale. Olde Towne Mall, 20 S Main St, Janesville, (608) 290-1911 or (608) 754-4544, aauw-janesville.net

12 Fall Wine Walk. Downtown Beloit. 2-6pm. Tickets available for purchase. downtownbeloit.com

12 Fall Fest Market: Craft & Vendor Fair. Chapel Specialties on the Square, 880 McEwan Ln, Milton, (608) 201-8217

13 Back Bar Charity Car, Truck & Bike Show. The Back Bar, 1901 Beloit Ave, Janesville, (608) 751-2201, thebackbar.com

16 Tastes of the Chamber. 5-8pm. Eclipse Center. 3 Eclipse Blvd, Beloit. greaterbeloitichamber.org

18 Treats on the Trail. Trick or Treat on the Orfordville Walking Path behind Village Hall. 303 E Beloit St, Orfordville. facebook.com/OrfordvilleLionsClub

25-26 Downtown Janesville Halloweekend. Trick-or-treating, a zombie run, a Halloween-themed movie, and more, Downtown Janesville, 69 S River St, downtownjanesville.com

26 Merchant trick or Treat. Local businesses open their doors to hand out candy. Scavenger hunt. Downtown Evansville. evansvillechamber.org

26 Fall Festival Vendor Expo. Rock County Fairgrounds, 1301 Craig Ave, Janesville

26 Halloween Costume Parade & Party. Downtown Beloit. Live music, entertainment, and activities. downtownbeloit.com

27 Show Me Reptile Show. Holiday Inn Express / Janesville Conference Center, 3100 Wellington Pl, showmesnakes.com

27 Fall O Ween. Clinton Chamber of Commerce hosts trick or treating at businesses, fundraisers, vendors. clintonchamberwi@gmail.com

November

1 Day of the Dead / HalloWine Costume Party at Northleaf Winery. 630-930pm. Prizes for best costume. 232 S Janesville St Milton northleafwinery.com

22,23 Olde Fashioned Christmas. Free family event. Santa, carriage rides, movie, ornament & cookie decorating. Downtown Evansville. facebook.com/oldefashionedChristmas

23 Annual Holiday Bazaar. 9am-2pm. St John's Lutheran Church. 312 S third St, Evansville. office@stjohns-lc.org

27 Thanksgiving Pie Sale. 11am-3pm. Eager Free Public Library, 39 W Main St, Evnsville. facebook.com/friendsofEFPL

27 Love Light Tree Lighting Ceremony. 5pm at Grange Mall. 19 W Main St, Evansville. 882-9900. facebook.com/AwareEvansville/

29 Lighted Holiday Parade & Tree Lighting. 5-8pm. Downtown Beloit. downtownbeloit.com

30 Small Business Saturday. Small businesses in all communities hosting specials, events, etc.

December

5 Holiday Art Show & Sale Opening Reception, Janesville Performing Arts Center, 408 S Main St, Janesville. janesvilleartleague.org

5-8 Merry Milton Weekend. Kick off the holiday season with activities throughout Milton

6 Holidayzle. Downtown Beloit. Art, crafts, vendors, Santa, music, trolley rides. downtownbeloit.com

6-8 Janesville's Jolly Jingle. Fun family getaway weekend filled with activities, Downtown Janesville, 51 S Main St, (608) 755-3030, janesvillejollyjingle.com

7 Orfordville Lion's Club Holiday Parade. facebook.com/OrfordvilleLionsClub

7 40th Evansville Craft Fair. \$1 admission fee. 9am-2pm. JC McKenna Middle School, 307 S First St, Evansville. 882-4780

7 Pop Up Christmas Shop. Chapel Specialties on the Square, 880 McEwan Ln, Milton, (608) 201-8217

7, 21 Rock County Mega Sale. Indoor flea market, Rock County Fairgrounds, 1301 Craig Ave, Janesville

8 Ecumenical Holiday Choir Concert. 5pm. Free. St Paul Catholic Church. 39 Garfield Ave, Evansville.

20 Winesmas at Northleaf Winery. Piano bar, ugly sweater contest, and more. 232 S Janesville St, Milton. northleafwinery.com

TBA A Christmas Carol at the Milton House. Milton House Museum, 18 S Janesville St, Milton, (608) 868-7772, miltonhouse.org

TBA Wreaths on Parade. Milton House Museum, 18 S Janesville St, Milton, (608) 868-7772, miltonhouse.org

*All event details are subject to change. Check websites & socials for the most up to date information.

Fall Attractions

Seasonal Orchards & Pumpkin Farms

Apple Hut

1718 Walters Rd, Beloit
facebook.com/people/The-Apple-Hut

Hawk's Orchard & Farm

9034 N Serns Rd, Milton
facebook.com/hawksorchardandfarm

Hermanson Pumpkin Patch

127 Cty Hwy N, Edgerton
hermansonpumpkinpatch.com

Winter Wonderland

Snowshoe Rental

Rock County Parks offers snow shoe rentals from youth, up to 100 pounds, to adults up to 250 pounds. Reservations must be made in advance during office hours (Mon.-Fri. from 7-330pm) with the Rock County Parks Department at 608-757-5450. Visit them online for pricing information.

legacy.co.rock.wi.us/parks-snowshoe

 Rock County Parks

Meyer's Farm Market

1329 M-H Townline Rd, Milton
facebook.com/meyersfarmmarket

Skelly's Farm Market

2344 Hayner Rd, Janesville
skellysfarmmarket.com

Farmers Markets (May - Oct)

Beloit Farmers Market

Saturdays 8am-1pm
State Street & Grand Ave, Beloit
downtownbeloit.com

Snowmobiling

Rock county offers a plethora of snowmobile trails maintained by local clubs. For maps, conditions, and more visit Rock County Parks - Snowmobile trails. Snowmobile Hotline: 608-757-5458

co.rock.wi.us/departments/public-works-parks/snowmobile-trails

Janesville Farmers Market

Saturdays 8am-1pm
Main Street in downtown Janesville
janesvillefarmersmarket.com

Rock County Farmers Market

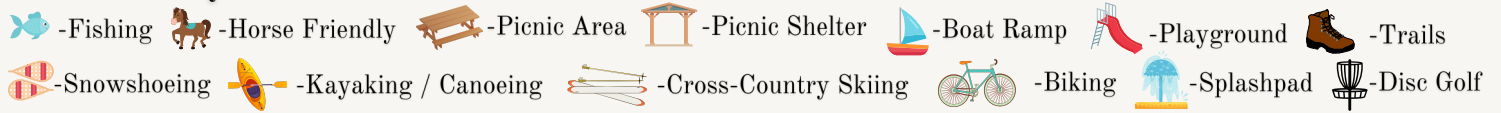
Sundays 8am-1pm
5013 W Hwy 11, Janesville
rockcountymarket.com

Where can I find more Seasonal fun?

rockcounty.org
janesvillecvb.com
visitmilton.com
visitbeloit.com
visitedgertonwi.com
evansvillechamber.org
co.rock.wi.us/departments/public-works-parks

For a more complete & up to date listing of seasonal fun please visit community tourism sites, parks and recreation sites, and socials!

Rock County Outdoor Recreation



PARKS & TRAILS

BELOIT

- 1 Big Hill Park** 1101 Big Hill Rd
Paved & gravel walkways
- 2 Beckman Mill Park** 11450 S County Hwy H
52 acres ~ Historic features
- 3 Riverside Park** 1160 Riverside Dr
Rock River ~ 4 miles paved trails ~ Turtle Island Playground ~ Tennis courts ~ Concessions ~ Paddle boat rentals
- 4 Schollmeyer Park** 2767 E Trail Dr
1 acre ~ Access to Turtle Creek
- 5 Sugar River Park** 11317 S Nelson Rd, Brodhead, WI
7 acres ~ Sugar River access ~ Canoe launch
- 6 Summit Park** 1218 Henry Ave
Playground & Splash pad ~ Basketball court ~ Soccer field
- 7 Sweet-Allyn Park** 7149 S County Hwy J
39 acres ~ Turtle Creek ~ Softball diamond ~ Canoe launch
- 8 Vernon Park** 934 Vernon Ave
Playground ~ Splashpad ~ Football field ~ Baseball diamond

CLINTON

- 9 Carver Roehl Park** 4907 S Carvers Rock Rd
52 acres ~ 2 miles of unpaved trails ~ Limestone outcroppings
- 10 Farmers Park** Located on Mill St
Pelishak-Tiffany Nature Trail ~5.5 miles unpaved trails ~ Snowmobile trails
- 11 Lee Park** 9205 E County Hwy W
39 acres ~ Softball diamond ~ Wildlife area
- 12 Turtle Creek Parkway** 6528 S Smith Rd
4 acres ~ Turtle Creek ~ Building available for rent
- 13 Turtle Creek Access @ 140** 5501 S Hwy 140
1 acre ~ Popular kayak & canoe access spot for Turtle Creek
- 14 Indianford Park** 8901 N Country Rd F
1 acre ~ Known for fishing ~ Rock River
- 15 Murwin Park** 6407 W Caledonia Rd
48 acres ~ Yahara River shoreline
- 16 Miller Farm Wetlands Conservancy** 8104 N Hwy H
59 acres undeveloped park ~ Confluence of Yahara River and Rock River

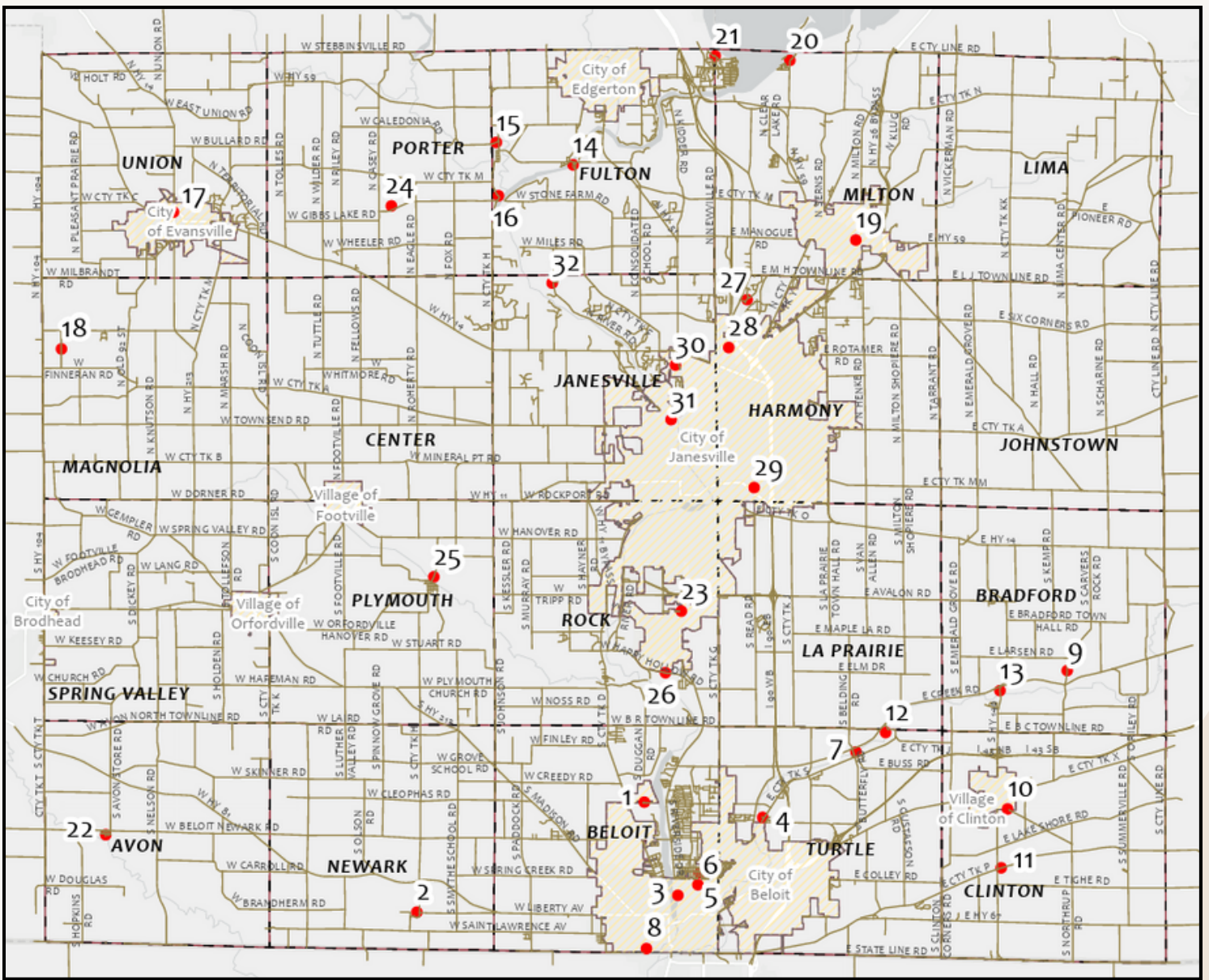
EVANSVILLE

- 17 Lake Leota Park** 5 Antes Dr
Lake Leota access ~ Baseball diamond ~ Basketball & tennis courts ~ Skate park ~ Aquatic center
- 18 Magnolia Bluff Park** 4002 N Croak Rd
122 acres ~ 6 miles unpaved trails
- 19 Goodrich Square Splashpad** 413 Parkview Dr
- 20 Royce Dallman Park** 11500 N Charley Bluff Rd
4 acres ~ Lake Koshkonong
- 21 Koshkonong Lake Access** 1005 E Lakeside Dr
13 acres ~ Lake Koshkonong

JANESVILLE

- 23 Airport Park** 1020 W Knilans Rd
2 acres ~ Air traffic viewing
- 24 Gibbs Lake Park** 9103 W Gibbs Lake Rd
278 acres ~ 3/4 miles of shoreline ~ Unpaved trails
- 25 Hanover Wildlife Area** 2665 S Cty Hwy H
27 undeveloped acres ~ Wildlife refuge
- 26 Happy Hollow Park** 1731 W Happy Hollow Rd
185 acres ~ Rock River ~ 4 miles unpaved trails
- 27 Ice Age Park** 5504 N Sable Dr
3.2 acres ~ undeveloped park ~ Access to Ice Age Trail
- 28 Ice Age Trail** 4101 Kennedy Rd
- 29 Palmer Park** 2501 Palmer Dr
164 acres ~ CAMDEN playground ~ Zipline ~ Wading pool ~ Restrooms
- 30 Walt Lindeman Sportsman's Park** 3411 N Hwy 51
10 acres ~ Restrooms & playground
- 31 Riverside Park** 2600 Parkside Dr
Concession stand ~ Bathrooms ~ Zipline ~ Golf course
- 32 Rock River Heritage Park** 5801 N River Rd
178 acres ~ Lake

*This list consists of City & County owned parks.



Rock County Map

Whether you're in it for the stunning views or the family bonding - Rock County has a plethora of trails & parks for your leisure.

Picnic shelters are available for reservation at many of the parks listed.

For more information about any of the parks listed, please visit the host city website or the county park listing.



co.rock.wi.us/departments/public-works-parks/parks-info-maps

Rock County Recreation

Aquatic Centers

- Krueger Pool - 1700 Hackett St - Beloit, WI
- Edgerton City Pool - 312 N Main St - Edgerton, WI
- Veteran's Memorial Aquatic Center - 360 Burr W Jones Circle - Evansville, WI
- Rockport Pool - 2801 Rockport Rd - Janesville, WI
- Palmer Park Wading Pool- 2501 Palmer Dr - Janesville, WI

Ice Arenas

- Janesville Ice Arena - 821 Beloit Ave - Janesville, WI
- Edwards Ice Arena - 2101 Cranston Rd - Beloit, WI

Public Golf Courses

- Prairie Woods Golf Course - 12601 E County Rd A - Albion, WI
- Krueger Golf Course - 1611 Hackett St - Beloit, WI
- Creekview Par 3 - 770 Albion Rd - Edgerton, WI
- Evansville Golf Club - 8501 N Cemetery Rd - Evansville, WI
- Bass Creek Golf Club - 1303 S Murphy Rd Janesville, WI (Footville)
- Blackhawk Municipal Golf Course - 2100 Palmer Dr - Janesville, WI
- Cecilia's Golf Course - 1901 S Emerald Grove Rd - Janesville, WI
- Glen Erin Golf Club - 1417 W Airport Rd - Janesville, WI
- Riverside Municipal Golf Course - 2100 Golf Course Rd - Janesville, WI



Magnolia Bluff Park ~ Photo by Mariah Calley

Rock River



Maps Legend

- Rock River Access for canoes, kayaks, boats

Boat Launches & Water Access Points

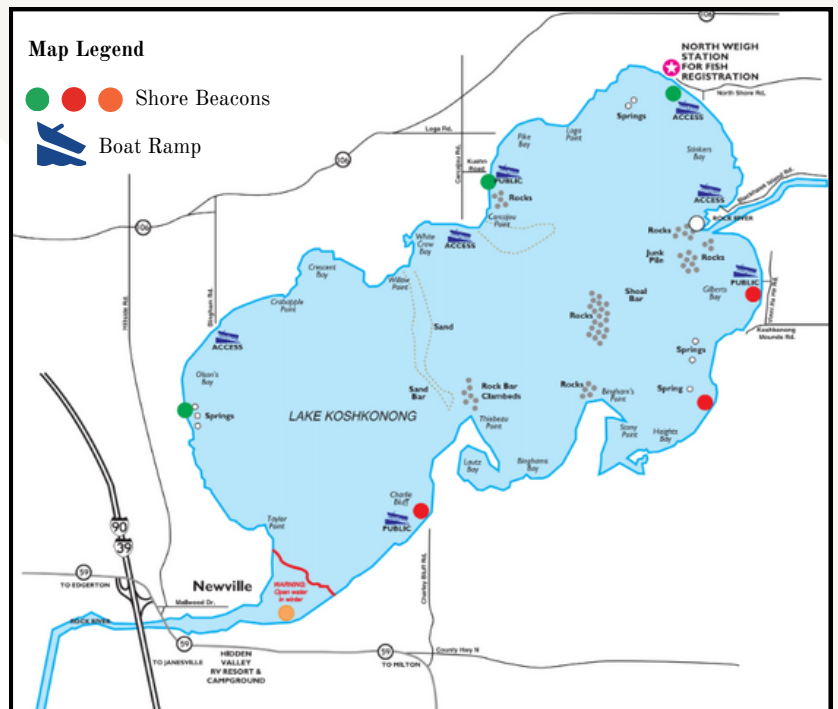
Over 36 miles of the Rock River is located in Rock County. With numerous access points, the Rock River offers fishing, boating, kayaking, canoeing, and more!

Lake Koshkonong, located on the northern end of the Rock County portion of Rock River, is a 10,595-acre lake that is a destination for boating, fishing, swimming and more. During the colder months the lake is perfect for snowmobiling and ice fishing.

An ideal spot for fishing, Lake Koshkonong has musky, panfish, largemouth bass, smallmouth bass, northern pike, walleye, and catfish.

Many access points are also listed, below and also on the Parks & Trails listing found on page 7.

Lake Koshkonong



visitedgertonwi.com/lake-koshkonong/

Watercraft Rental & Sales

Anchor

718 E State Rd 59, Edgerton, WI
anchorfun.com

Floating Toy Pontoon Rentals

723 E Ellendale Rd, Edgerton, WI
floatingtoy.com

Boat Launches & Parking

Anchor

718 WI-59, Edgerton, WI

Royce-Dallman Park

11500 N Charley Buff Road, Milton, WI

Newville Public Boat Launch

10007 N Ellendale Rd, Edgerton, WI

Glen Oaks Beach

Indianford County Park

8901 N County Rd F, Edgerton, WI

Other Resources

dnr.wisconsin.gov

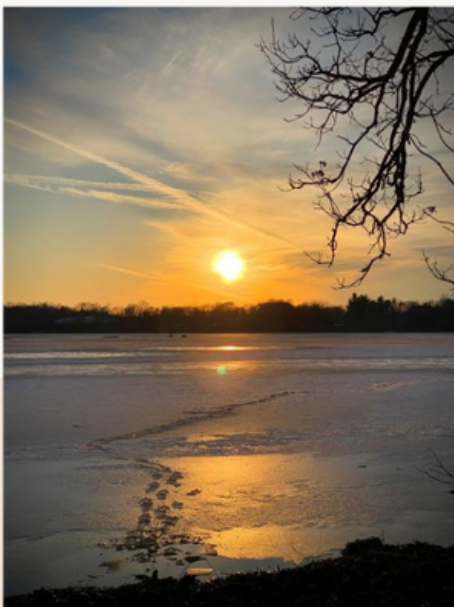
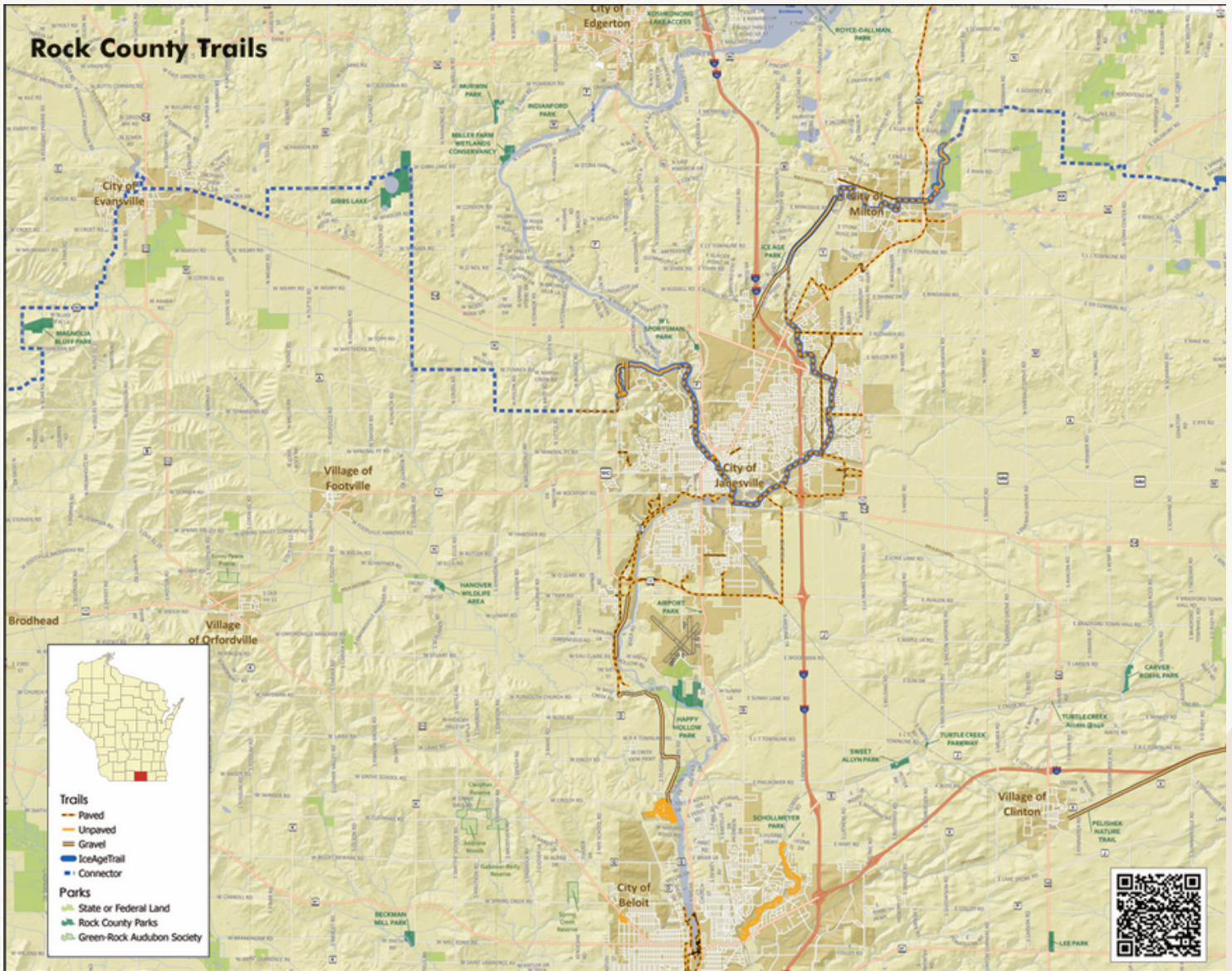
rkld.org

rockrivertrail.com



Lake Koshkonong

Full Spectrum Photography



Gibbs Lake

Mariah Calley

Rock County Trail Map

The Ice Age Trail is a one of only 11 National Scenic Trails in the entire country. Experience many of Wisconsin's unique glacial features along this trail. Ideal for snowshoeing, hiking, backpacking, and more - this trail features both paved and unpaved portions.

Scenic views, fresh air, unique hiking opportunities, and more make Rock County's trail system a worthwhile attraction during your visit.

For more trail listings, see page 7.



Beckman Mill in Beloit, WI

Cooksville

Known as “the town that time forgot” because technology bypassed the community around the beginning of the 20th century, Cooksville is a jewel of well-preserved mid-19th century Green Revival and Gothic Revival architecture. Approximately 35 buildings and historic sites comprise The Cooksville Historic District.

The Cooksville Farmhouse Inn is the perfect place to stay for family gatherings or for a comforting retreat from the hustle & bustle of city life.



Grab lunch at the pavilion in Orfordville! Located downtown.

Orfordville

Orfordville is the perfect destination for a peek at life in small town America, situated at the corner of Hwy 213 & Hwy 11. Quaint shops downtown, hidden gem restaurants, playgrounds, and a walking trail make this an ideal stop on your trip through Rock County.

The Annual **Airing of the Quilts** event that takes place throughout the downtown & Purdy Park has become a huge draw for quilt admirers & enthusiasts everywhere! Out of state travelers come to see all of the quilts that are put out for show, long arm quilting demonstrations, and more. Vendors are also on site as part of **Market Days**.

In June the annual **Orfordville Community June Days** takes place in Purdy Park. With kids activities, live music, food trucks, a car show, tug of war competition and more - there is something for everyone!

During the Christmas season bring the whole family for a drive to look at all the homes decorated for the **Christmas Decorating Contest**. Join us for the annual **Christmas Parade** that runs through the downtown and stops at Purdy Park, where Santa Claus is waiting with hot chocolate to greet everyone! Follow it up with a visit to the **Children’s Christmas Benefit** at the Legion. This benefit includes a visit from Santa, raffles, dinner, and more.

For more information pertaining to events please visit our community calendar at Orfordville.org/Events.

Clinton

If hiking is your thing, come and enjoy the **Pelishek-Tiffany Nature Trail** that starts in the Village and goes east into Walworth County, or hike or cross-country ski through **Carver-Roehl County Park**, where the magnificent geological formations provide a scenic backdrop.

Just south of Clinton, **Lee Park** is a great spot for a family picnic. The park features a nature trail that winds through the scenic woods. Visit this friendly community the first Friday in December for the **Winter Wonderland Festival**, including seasonal activities and the famous **Lighted Parade**.



Airing of the Quilts - The Sassy Farm Chicks Quilt Co (Orfordville)

Town of Beloit

Located between Beloit & Janesville, the Town of Beloit presents visitors with a healthy indulgence of rural charm. Boating and water sports have a long tradition in the Town of Beloit, as the **Rock River** provides abundant opportunity for water oriented recreation. The community’s **Armstrong Eddy and Preservation Parks** both have boat launching facilities and ample parking for visitors who wish to enjoy the river’s scenery, water sports and fishing. You can access both park locations from US Hwy 51. Wild turkeys are often seen near the scenic **Rock River Prairie Preserve**, situated above the Rock River.



Autorama - one of the largest car shows in the midwest (Beloit).



2024 Events

- May 4 Rummage Sale Day - Village wide rummage sales - Orfordville.Org
- May 11 Market Day 9am-11am - 304 E Beloit St - Facebook.com/OrfordvilleMarketDays
- Jun 7-9 June Days - 100 W Church St - Live music, games, and more. Facebook.com/OrfordvilleCommunityJuneDays
- Jun 9 Market Day 12-5pm - 100 W Church St - Facebook.com/OrfordvilleMarketDays
- Sep 14 Airing of the Quilts - SassyFarmChicks.com
- Sep 14 Market Day 9am-3pm - 100 W Church St - Facebook.com/OrfordvilleMarketDays
- Oct 12 The Legion Car Show - 3913 Hwy 213
- Oct 12 Fall Fest - Orfordville.Org
- Oct 18 Treats on the Trail - 303 E Beloit St - Facebook.com/OrfordvilleLionsClub
- Nov 16 Market Day 9am-1pm - 408 W Beloit St - Facebook.com/OrfordvilleMarketDays
- Dec 7 Lion’s Club Holiday Parade - Facebook.com/OrfordvilleLionsClub
- Dec 7 Children’s Christmas Benefit - 3913 Hwy 213

Beloit ~ Where Stories Begin

Beloit, known for its rich culture and scenic beauty, has become the perfect place for food and drink enthusiasts to explore. From trendy cafes to upscale dining establishments, Beloit is home to a wide range of locally owned restaurants that cater to every palate, including breweries and wineries. Whether you're a fan of comfort food, legendary supper clubs, or delectable desserts, Beloit offers an unforgettable experience to all those seeking a taste or sip of the extraordinary.

In addition to its remarkable food and drink scene, Beloit offers a warm and welcoming atmosphere that makes every dining experience even more delightful. The city is known for its friendly locals who take pride in sharing their culinary traditions with visitors. Whether you're enjoying a meal at a cozy rustic tavern, stopping at a food truck at the state's second-largest farmers' market, or dining with a picturesque view of the Rock River, the Midwest charm and hospitality of Beloit will leave a lasting impression.

Historically preserved buildings and a brick-paved main street showcase the downtown as a **Wisconsin Main Street** success story. There are several downtown events and festivities throughout the year including **Street Dance**, **Oktoberfest**, two **Wine Walks**, **Bites of Beloit**, **Holidazzle**, and a **Grand Lighted Holiday Parade**, to name a few.

Performing and visual arts begin with the **Beloit Art Center** and transcend into such events as **Deviante** and **BIFF (Beloit International Film Festival)**.

Beloit College offers many cultural opportunities including the **Wright Museum of Art**, the **Logan Museum of Anthropology**, concerts, dance and theatre productions, and athletic events.

Relive the adventures of the original Indiana Jones, Roy Chapman Andrews, right here in his hometown through Visit Beloit's self-guided **Historical Walking Trail**. The Historical Walking Trail is just one of several trails including an **Outdoor Art Trail**, **Taco Trail**, and **Craft Beer Trail** that you can complete at your own pace throughout your time visiting Beloit.

The family and children will love annual events such as **Beloit Dirty Dash**, **Beloit Winterfest**, **Beckman Mill Tours**, **Movie on the Big Lawn**, the **Easter Eggstravaganza**, and the **Halloween Costume Parade and Party**.

We are especially proud that the **Beloit Sky Carp** call Beloit home. The Sky Carp are the High-A affiliate of the Miami Marlins and play their minor league baseball games in the dazzling **ABC Supply Stadium** located in Downtown Beloit.

With its beautiful natural surroundings, cultural attractions, family-friendly accommodations, and a calendar full of events, each season brings new adventures in our charming city. Pack your bags, gather your loved ones, and head to Beloit. Your stories begin here.



Beckman Mill Park



ABC Supply Stadium - GO SKY CARP!!

2024 Events:

Jan 26-28 Beloit Winterfest -

BeloitRecreation.com/Beloit-Winterfest

Feb 24 Maple Sugar Fest - WeltyCenter.org

Mar 30 Downtown Easter Eggstravaganza - DowntownBeloit.com

Apr-Sep Sky Carp Baseball - MILB.com/Beloit

Apr 5-14 Beloit International Film Festival (BIFF) - BeloitFilmFest.org

Apr 20 Spring Wine Walk - DowntownBeloit.com

May-Oct Beloit Farmers' Market - DowntownBeloit.com

May-Oct Beckman Mill Guided Tours - BeckmanMill.org

May 24-Sep 20 Fridays in the Park - DowntownBeloit.com

Jun-Aug Dancing at Harry's Place - FriendsofRiverfront.com

Jun 15 Juneteenth Celebrations - VisitBeloit.com

Jul 4 Concert & Fireworks - VisitBeloit.com

Jul 21 Ice Cream Social at Beckman Mill - BeckmanMill.org

Aug 2 Street Dance - DowntownBeloit.com

Aug 17 Beloit Dirty Dash - BeloitRecreation.com

Sep 8 Heritage Sunday at Beckman Mill BeckmanMill.org

Sep 15 Autorama - BeloitAutorama.org

Sep 21 Oktoberfest - DowntownBeloit.com

Oct 12 Fall Wine Walk - DowntownBeloit.com

Oct 16 Taste of the Chamber - GreaterBeloitChamber.com

Oct 26 Halloween Costume Parade & Party - DowntownBeloit.com

Nov-Apr Winter Crafter & Farmers' Market - DowntownBeloit.com

Nov 29 Grand Lighted Holiday Parade - DowntownBeloit.com

Nov 30 Small Business Saturday - DowntownBeloit.com

Dec 6 Holidazzle - DowntownBeloit.com



Beloit Farmers' Market



Visit Beloit

656 Pleasant St., Beloit, WI

info@VisitBeloit.com

VisitBeloit.com

Edgerton

You'll find Edgerton's charming downtown to be a treasure trove of history, one of Rock County's gems. From its historic buildings, such as the Railroad Depot and tobacco warehouses, to its quaint shops, parks and festivals, Edgerton beckons you to visit, explore and enjoy.

A beloved book "Rascal" written in 1963 has made the Sterling North House and Museum in Edgerton an international destination. The autobiography by Sterling North recounts his youthful adventures with adopting a baby raccoon at the turn of the century. The well-loved novel was also made into a Disney movie by the same name.

Edgerton's old-fashioned brick storefronts are scenic backdrops for its wealth of historic sites and festivals. If you work up an appetite while exploring downtown, or riding the bike trails, stop at one of the many pubs or restaurants in the area. You can follow it up by enjoying a production in the state-of-the-art Performing Arts Center.

Be sure to stop in to see the WPA Mural in the Post Office, the Edgerton Area History Museum in the railroad depot, or the restored 1800s log cabin in Clay Pit Heritage Park. Take the family to cool off at the Edgerton Aquatic Center, a great facility for all ages that features a playground, graduated pool and sand volleyball.

Edgerton offers many special reasons to visit throughout the year. In the summer enjoy the weekly Edgerton Community Farmers Market, Tobacco Heritage Days and Rock River Threshere, followed by Chilimania. Fall brings the Sterling North Book & Film Festival in October. Winter festivities end the year with the downtown Christmas Tree Lighting and the Snowflake Craft Fair.

Newville and Lake Koshkonong

Lake Koshkonong, one of Wisconsin's largest lakes, is a vacationers' playground all year, with water sports, fishing and boating in summer, and snowmobiling and ice fishing in the winter. Lake Koshkonong is over 10,460 acres, and has a maximum depth of 7 feet. Anglers enjoy fishing for northern pike or walleye, as well as crappie, catfish, white bass and bluegills. The lake and surrounding wetlands are a haven to multitudes of birds and wildlife, including American White Pelicans and Sandhill Cranes.

Newville provides access to Lake Koshkonong and the Rock River and has several places to launch boats at public launches and marinas. It is conveniently located on Interstate 90-39 at highway 59, on the northern border of Rock County. The area offers a variety of dining experiences, including Wisconsin Supper Clubs, with many of the area restaurants and bars located right on the water with boat docks. For a leisurely time, rent a pontoon boat and cruise the river and the lake. If camping is your pleasure, the Lake Koshkonong area offers more campsites than any other area in Wisconsin. Other lodging opportunities in the Lake Koshkonong area include Bed and Breakfasts, hotels and vacation rentals.

Whether you choose to drop a line into the water, or drop yourself into a lounge chair; groove to some live music, or revel in the quiet of the lake sunrise, you'll find Lake Koshkonong to be the perfect Wisconsin getaway.

Indianford / Fulton

Once the spot where Chief Blackhawk and his braves crossed the Rock River, the rushing waters below the Indianford dam may well be the best fishing spot in the county. Standing along the river bank in scenic Indianford Park, anglers catch impressive northern pike or walleye, as well as an abundance of crappie, catfish, white bass and bluegills. The Fulton Congregational Church, listed on the National Historic Register, and the restored school house next door offer a glimpse into yesteryear.

cityofedgerton.com

edgertonwichamber.com

2024 Events

Jul 19-21 Tobacco Heritage Days Live music, the Rascal Run 5k run/walk and 1 mile run/walk, and activities for the whole family, Downtown & Racetrack Park. (608) 751-2258 - edgerton tobaccodays.com

Aug 30 - Sep 2 Rock River Threshere Living history festival with working antique steam engines and equipment demonstrations, military displays, kids activities, Thresherman's Park, 51 E Cox Rd. (608) 868-2814 - threshere.com

Sep 6-7 Chilimania & Country Edge Concert, Downtown Edgerton, 99 N Henry St, (608) 561-7566 - chilimania.com



Rock River Threshere Full Spectrum Photography



Yahara River Kim Hoholek Photography



Tobacco Heritage Days Kim Hoholek Photography

2024 Events

February 10 Chocolate Extravaganza | Creekside Place

February 11 Souper Bowl To-Go | Creekside Place

March 1-2 Vintage Shop Hop | Citywide

March 3 FFA Farm Toy Show | School District Field House

May 2 Creekside Cruise Night | Creekside Place

May 10 Art Crawl | Downtown Evansville

May 27 Memorial Day Recognition & Rally in the Alley | VFW

June 1 Grove Society Museum Opening | Leonard-Leota Park

June 6 Creekside Cruise Night | Creekside Place

June 28 Ice Cream Social | Emma's Table

July 4 5K/10K/1 Mile Fun Run/Walk | Leonard-Leota Park

July 4-7 A Lake Leota Fourth | Leonard-Leota Park

July 11 Creekside Cruise Night | Creekside Place

August 1 Creekside Cruise Night | Creekside Place

August 2-3 Citywide Garage Sales

August 25 History in the Park | Leonard-Leota Park

September TBD Ladies Night Out | Downtown Evansville

September 5 Creekside Cruise Night | Creekside Place

September 21 CreekFest | Creekside Place

October 4-5 Vintage Shop Hop | Citywide

November 22-23 Olde Fashioned Christmas | Downtown Evansville

November 30 Small Business Saturday | Citywide

December 7 Craft Fair | J.C. McKenna Middle School

Evansville

Shop, bike, fish, stroll around...

So much variety in and around Evansville!

Enjoy a picnic lunch or bring your kayak to the lake in beautiful Leonard-Leota Park. Roam rustic roads and follow a guided map that showcases the unique charm of urban and rural barn quilt folk art.

Settled in 1839, Evansville has "the finest collection of 1840s to 1915 architecture of any small town in Wisconsin," according to the Wisconsin Historical Society. More than 300 residential and commercial properties are listed on the National Register of Historic Places. A free map shows dozens of grand architectural styles in a highly walkable area. The map is part of the free Walker's Guide tour book available at many downtown locations, or by writing to EvansvilleChamber@gmail.com.

Strolling through the neighborhoods, you might occasionally encounter live music concerts on porches, courtesy of Evansville Underground Music. Then amble downtown, where you can enjoy dining and shopping for vintage, antique, repurposed and consigned items.

Historic Leonard-Leota Park is home to a spring-fed lake, popular nine-hole disc golf course, picturesque covered foot bridge and local history museum. During the Fourth of July at the park, fireworks dazzle the sky over the water. Year-round, birdwatchers crow about the avian variety that call the park home. Birdies of another kind are found at the popular 18-hole public golf course at Evansville Golf Club. Nearby, Magnolia Bluff County Park has hiking and equestrian trails with a view for miles, and the Ice Age Trail now takes bikers and hikers through the heart of Evansville.

For more information about how to enjoy the best that Evansville offers, including places to stay, eat and play, please visit

www.ci.evansville.wi.gov or www.evansvillechamber.org.

Contact the Chamber at 608-882-5131 or EvansvilleChamber@gmail.com.



Olde Fashioned Christmas



Art Crawl



Magnolia Bluff



2022 Ladies Night Out

Evansville is growing in 2024! Stay tuned for their brand new aquatic center at Larson Acres Park (formerly West Side Park) and for the splash pad coming to Leonard-Leota Park. With new and expanded features, Evansville is fun for the whole family!



Janesville

Explore hundreds of acres of tranquil parkland and miles of peaceful trails. Take in the beauty of our award-winning botanical garden, dine and shop in our charming downtown and experience our 13 historic districts. Savor a craft beer or locally made wine & relax at one of our welcoming and affordable lodging options. Sit back and immerse yourself in live theater or feel the exhilaration as you watch a performance by one of the world's best water-ski shows teams. Bring the family and enjoy the fun at any of our many festivals and special events including the **Tour of America's Dairyland Janesville Town Square Gran Prix Bike Race, Tallman Arts Festival, Rotary Pie Ride, Art Infusion, Janesville's Jolly Jingle and the Holiday Light Show.**

Wisconsin's Great Outside
Janesville is all about savoring the outdoors. Take advantage of our 60 parks including **Traxler Park**, home to the **Rock Aqua Jays Water Ski Show Team** and **Palmer Park**, home to **CAMDEN Playground**, one of the region's largest accessible playgrounds. At 246 acres, **Rockport Park** is Janesville's largest park, with lots of activities for kids & teens. It includes the **Peace Park Playground** and Pavilion. **Riverside Park** offers opportunities to enjoy pickle ball, shuffleboard, disc gold and river access. It's also home to the **Devil's Staircase**, a segment of the Ice Age Trail. Our 30 miles of trails, including a portion of **Wisconsin's Ice Age Trail**, connect many of our neighborhoods, parks, and attractions. **Skelly's Farm Market** offers three seasons of fun. **Rotary Botanical Gardens** is an award winning, 20-acre non-profit botanic garden, home to many themed gardens. Some with an international focus, such as the Japanese and English Cottage gardens, while others are less formally structured, such as the children's garden. In December, the Gardens presents the spectacular **Holiday Light Show**.

Come Inside
The **Janesville Performing Arts Center's** 633 seat theatre also includes a lobby, art gallery, and black box theatre, and is located in the former historic Janesville High School and features national, regional and local talent. Janesville has a rich history with many buildings of historical interest and 13 historic districts. The **Rock County Historical Society's Lincoln-Tallman House** is one of the many Janesville buildings listed on the National Register of Historic Places and tours of the Lincoln-Tallman House are available. The Rock County Historical Society serves as a resource for historical research, thought-provoking programming, and one-of-a-kind historic sites. For edge of your seat action catch the Janesville Jets, a Junior A hockey team, with exciting home games played at the Janesville Ice Arena.

Downtown Janesville
Janesville's vibrant downtown is filled with opportunities for fun, exploration, and discovery. It is rapidly becoming a dining and shopping destination. The scenic Town Square and Festival Street area is the hub of downtown and is the location of many of Janesville's events. It features the Blain-Gilbertson Heritage Bridge, a lighted pedestrian bridge that offers scenic views at every turn and an interactive water feature, The Bubbler.

Art Infusion
The Janesville Area Convention & Visitors Bureau's Art Infusion event (held annually in September) features a sidewalk chalk competition, and the installation of other pieces of art including large scale painted murals.

Recharge your spirits as you explore...



Kim Hoholeck Photography

Rock Aqua Jays Water Ski Show



808 Poke Full Spectrum Photography



Kim Hoholeck Photography

In History We Trust Mural by Artist Jeff Henriquez

Janesville Area Convention & Visitors Bureau
20 S Main St., Suite #11 Janesville, WI
608-757-3171 800-487-2757
JanesvilleCVB.com ~ Visit@JanesvilleCVB.com 14



Nature

Hike, bike, snowshoe or cross-country ski on Janesville's extensive trail system. Many species of native trees, plants, and wildlife can be found in these areas.

Garden Art Project

Visit the award-winning Rotary Botanical Gardens during the summer to explore the annual Garden Art Exhibit. From May to September handcrafted wooden shapes created by Garden volunteers and decorated by local artists are displayed throughout the Gardens.

Dining & Shopping

Discover Janesville's charming downtown where you'll find lots of options for dining and shopping. Many local businesses offer online ordering / shopping, curbside and delivery options.

Birding

Get outside and enjoy Janesville's most scenic natural areas, with a mix of wetland and forested areas that draw both birds and birders. Janesville achieved Bird City designation in 2013 from Bird City Wisconsin.

Public Art Trail

Janesville is home to more than 60 pieces of outdoor public art including 28 large-scale murals, plus sculptures, markers and memorials. Download the brochure at JanesvilleCVB.com to explore the trail.



Signature Events

Spring & Summer

- Civil War Living History Days (May)
- Concerts at the Gathering Green
- 4th of July Festival
- Pork Roast & Makers Market (August)

Fall

- Twilight Tours of the Milton House Museum (October)
- Pumpkin Fest (October)

Holidays

- MACC Christmas Walk (December)
- Performance: A Christmas Carol, Milton House Museum (December)



Milton Community Days Event held monthly in the summer.
©Full Spectrum Photography

Welcome to Milton

We invite you to discover our history, hike and bike our wooded trails, boat and fish our lakes, taste a new wine or two, dine at a local supper club or old-fashioned pub, shop one of our boutiques or attend a fun event! Milton is steeped in history and unique opportunities for visitors. It is a friendly, engaging and delightful small town with interesting historic attractions, natural beauty, and charming shops, restaurants, brewery and wineries nestled in the center of scenic southern Wisconsin.

Explore Our Unique History

Tour the **National Historic Landmark Milton House Museum**, an 1844 stagecoach inn and authenticated stop on the Underground Railroad.

Take a self-guided walk through the **Milton College Historic District**, where former college buildings constructed in the mid-1800s have taken on new life.

Attend the **Civil War Living History Days** held annually in May to explore the soldiers' encampment and Underground Railroad, meet Abraham Lincoln, view cannon demonstrations, and more.



Milton House Museum



Civil War Living History Days
©Kim Hoholek Photography

Outdoor Fun

Scenic Trails

- Glacial River Trail
- National Scenic Ice Age Trail
- Rock River Trail

Boating, Fishing & Swimming

- Clear Lake
- Lake Koshkoning
- Storr's Lake

Parks, Playgrounds & Splashpad

- Crossridge Park
- Goodrich Square Splash Pad
- King Park Disc Golf Course & Sledding Hill
- Schilberg Park
- Tails n Trails Dog Park



Ice Age Trail
©Kim Hoholek Photography



Storr's Lake



All new Timber Hill Winery

Sip

Milton is home to three unique wineries, a mocktail bar and brew pub:

- Northleaf Winery & Taproom
- Timber Hill Winery (new location)
- Fermenting Cellars Winery
- Sober Inn (new in 2023)
- Good Works Brewing (new in 2023)

Shop

Milton has two distinct downtowns that offer plenty of exceptional shopping and dining. Here are a just a few:

- Elmside Goods
- Goodrich Antiques and Vintage Uniques
- Loose Threads Quilt Shop
- Red Rooster



Ice Shan Tea
©Full Spectrum Photography

Dine

Find everything from Wisconsin supper clubs to unique cafes in Milton.

- 59er Bar & Grill
- Buckhorn Supper Club
- Cafe 26
- Frederick's Supper Club
- Ice ShanTea
- Sharla's Coffee Shop

Year Round Activities

- Milton House Museum
- Self-Guided Historic District Walks
- Ice Age Trail



Buckhorn Supper Club Lobster Boil
©Kim Hoholek Photography



Sober Inn
©Lizanne Lately

Sample Itinerary

Family Fun

Bring the whole family!

Rent a campsite or cottage at **Milton KOA** and spend your trip enjoying the pool, game room, disc golf & sand volleyball amenities! Visit the **Goodrich Square Splash Pad** located right in **Milton**.

Take the kids hiking in **Evansville** on the **Magnolia Bluff** trail.

Spend a day in **Janesville**. Start by visiting **Palmer Park** and checking out the world's largest & most accessible playground - **Camden's Playground!** Then spend the afternoon shopping in the downtown area. Finish the night by enjoying dinner at **Genisa**. Parents can indulge in a glass of wine or espresso, and the whole family can appreciate this specialty pizza!

Travel to **Beloit** for a Friday of downtown shopping, burgers at **Lucy's #7 Burger Bar**, and a visit to **Riverside Park**, home of **Turtle Island** playground. Cool off with an evening paddle boat ride, or enjoy music at **Harry's Place**.



Enjoy live music at Northleaf Winery!

Romantic Getaway

Stay in **Beloit** at the **Ironworks Hotel** - a boutique hotel offering a variety of different packages, some of which include champagne delivered straight to your room!

Walk down to **Merrill & Houston's Steak Joint** for dinner, and explore all that downtown **Beloit** has to offer!

Plan to spend Friday in **Milton** shopping at the **Old Junction Mill** - home to **The Red Rooster** and **Peddlers Loft & Cellar**. Visit **Northleaf Winery** in the evening for a glass of their delicious wine and enjoy the live music!

Saturday is perfect for exploring downtown **Janesville** - visit **The Glass Garden** to soak in the beautiful art glass, and **Bodacious Olive** for craft olive oil. Stop at **Genisa** for fine espresso and pizza or a decadent dessert to carry you through the afternoon. Reserve tickets to a comedy show at **Janesville's Comedy Cabin**.

Spend Sunday soaking in the views from **Magnolia Bluff Park** in **Evansville**, and take some time to stroll through the historic homes & businesses.

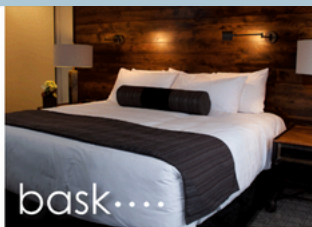
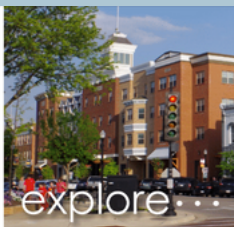


Rotary Botanical Gardens in Janesville

Marsha Mood



Genisa's pizza - YUM!



shop... explore... dine... bask...

plan your trip today at downtownbeloit.com

DOWNTOWN BELOIT

All-America City Award Winner • Most Romantic Main Street Award Winner

History Buff

Spend a day or two in **Evansville** exploring the over 300 residential & commercial properties listed on the National Register for Historic Places - In styles ranging from Queen Anne to Craftsman.

Visit **Janesville** and peruse their downtown shops.

While in town register for a stained glass workshop at **The Glass Garden**, or simply take in the beautiful glass available for sale. Don't forget to visit the historic **Lincoln-Tallman House!** Then head over to the **Rotary Botanical Gardens** for an afternoon stroll.

Spend a Friday in **Milton** for a tour of the historic **Milton House Museum**. Visit the **Milton College Historic District**, where college buildings from the mid 1800's have taken on new life. Stop by **Goodrich Antiques & Vintage Uniques** for a little shopping. Also stop by **The Old Junction Mill** - a beautifully renovated feed mill home to stores such as **The Red Rooster** and **Peddlers Loft & Cellar**. Spend your evening at **Northleaf Winery** enjoying live music and sampling a glass of their award-winning wine.

Travel south on Saturday for a guided tour of the old mill at **Beckman Mill Park**.

Genisa

SPECIALTY PIZZA / CHARCUTERIE
WINE BAR / ESPRESSO

FRESH INGREDIENTS
AND INNOVATIVE OFFERINGS



DOWNTOWN JANESVILLE
GENISAWINEBAR.COM

Rock County Accommodations

Legend: P - Pool, B - Breakfast Included, R - Restaurant

CAMPGROUNDS

Blackhawk Campground ~ 3407 E Blackhawk Dr, Milton ~ 608-868-2586

Creekview Campground ~ 748 Albion Rd, Edgerton ~ 608-921-8354

Hickory Hills ~ 856 Hillside, Edgerton ~ 608-884-6327

Milton KOA Family Campground ~ 872 E Hwy 59, Milton ~ 608-868-4141 ~ HiddenValleyMilton.com (P)

Lakeland RV Camping Resort ~ 2803 Hwy 59, Milton ~ 608-868-4700 (P)

Lakeview Campground ~ 1901 Hwy 59, Milton ~ 608-868-7800

BELOIT: HOTEL / MOTEL

Baymont Inn & Suites ~ 2900 Ford St ~ 608-365-8680 (B)

Del-Mae Motel ~ 1850 S Madison Rd ~ 608-362-8888

Driftwood Motel ~ 1826 Riverside Dr ~ 608-364-4081

Fairfield Inn & Suites ~ 2784 Milwaukee Rd ~ 608-365-2200 (PB)

Hampton Inn ~ 2700 Cranston Rd ~ 608-362-6000 (PB)

Hilton Home2Suites ~ 2750 Cranston Rd ~ 608-467-5500 (PB)

Holiday Inn Express ~ 3022 Ford St ~ 608-519-4040 (PB)

Hotel Goodwin ~ 500 Public Ave ~ 608-473-1400 (R)

Ironworks Hotel ~ 500 Pleasant St ~ 608-362-5500 (BR)

Quality Inn ~ 2786 Milwaukee Rd ~ 608-362-2666 (PB)

Super 8 ~ 2790 Milwaukee Rd ~ 608-365-6000 (PBR)

EDGERTON AREA: HOTEL / MOTEL

Coachman's Golf Resort ~ 984 Cty Rd A ~ 608-884-8484 (PBR)

Quality Inn ~ I-90 & Hwy 59 ~ 608-884-2118 (PB)

Town Edge Motel ~ 1104 N Main ~ 608-884-9328

EVANSVILLE: HOTEL, RETREAT CENTER

Boarders Inn & Suites by Cobblestone ~ 715 Brown School Rd ~ 608-882-0936 (B)

The Grove Guesthouse ~ 8 S Madison St ~ 608-290-3433

The Grove Retreat (groups) ~ 5 N Water St ~ 608-412-0908

Entertainment

ABC Supply Stadium
facebook.com/abcsupplystadium

Beloit Civic Theatre
beloitcivictheatre.org

**Beloit College International
Performing Art Series**
beloit.edu

**Beloit Janesville Symphony
Orchestra**
beloitjanesvillesymphony.org

Rock River Repertory Theatre
rockriverrep.com

Janesville Jets Hockey Team
janesvillejets.com

The Castle Beloit @ 501 Prospect
thecastlebeloit.com

Edgerton Performing Arts Center
Edgerton.k12.wi.us

Evansville Community Theatre
ecttheater.com

Janesville Performing Arts Center
janesvillepac.org

Janesville Little Theatre
janesvillelittletheatre.org

Kids, Fun and Drama (KFAD)
kfad608.com

Rock Aqua Jays Water Ski Show
rockaquajays.org

Friends of Riverfront
friendsofriverfront.com

Stage One, Inc
stageonewi.org

Theatre Unlimited, Inc
janesvillepac.org

University Theatre
www.edu/rock

Janesville Comedy Cabin
cabinlaughs.com

Laura Aldrich Neese Theatre
beloit.edu

BED & BREAKFASTS AND INNS

Cooksville Farmhouse Inn ~ 11203 N State Rd 138, Cooksville ~ 608-335-8375 (B)

Emerson House ~ 1810 Emerson St, Beloit ~ 608-368-8445 (B)

Guardian Angel B&B ~ 429 Prospect Ave, Janesville ~ 608-758-3211 (B)

Prairie Hill Retreat ~ 5130 E US Hwy 14, Janesville ~ 608-756-9850

JANESVILLE: HOTEL / MOTEL

AmericInn ~ 3900 Milton Ave ~ 608-371-9981 (PB)

Baymont Inn ~ 616 Midland Rd ~ 608-758-4545 (PB)

Cobblestone Hotel & Suites ~ 20 W Milwaukee St ~ 608-757-2200 (PB)

Hampton Inn ~ 2400 Fulton St ~ 608-754-4900 (PB)

Holiday Inn Express & Conference Center ~ 3100 Wellington Place ~ 608-756-3100 (PB)

Lannon Stone Motel ~ 1524 E Racine St ~ 608-752-7441

Microtel Inn ~ 3121 Wellington Place ~ 608-752-3121 (B)

Motel 6 ~ 3907 Milton Ave ~ 608-756-1742

Northern Town Motel ~ 1409 Center Ave ~ 608-754-0251

Quality Inn ~ 3520 Milton Ave ~ 608-754-0251 (B)

Redwood Motel ~ 3912 N Hackbarth Rd ~ 608-756-4500

Super 8 ~ 3430 Milton Ave ~ 608-756-2040

Towneplace Suites by Marriott ~ 2706 Pontiac Place ~ 608-898-4200 (PB)



ABC Supply Stadium - Home of the Beloit Sky Carp!

ROCK COUNTY'S LARGEST HOME SELLER



Mary Adamson
608-290-1843



Ken Bach
608-295-0875



Kelly Badertscher
608-898-3504



Ellen Brown
608-290-2144



Lynne Forrestal
608-921-3031



Mary Gilbank-Peterson
608-751-5868



Jenny Hallett
608-290-6555



Mary Johnson
608-289-2386



Jeff Joseph
262-719-8901



Molly Leonard
608-728-0103



Kimberly Nickols
608-295-9056



Rhonda Oshel
608-289-9776



Barb Palmby
608-290-2935



Charla Piper
608-359-9578



Tim Piper
608-208-3921



Drew Rollette
815-871-5159



Jason Sheridan
608-921-7411



Lynnea Strickland
608-921-9466



Katie Stumpf
608-289-6492



Macy Walter
608-931-0662



Sally Weaver-Landers
608-346-0569



Karen Williams
608-751-3939



Kierra Wilson
608-201-9474



Nina Wilson
262-433-1167



Jeff Joseph
Sales Director
262-719-8901



Mandy Fritsche-Norman
NMLS 557211
262-327-5700

LOOKING TO BUY OR SELL A HOME?

Go with Rock County's trusted leader
for **OVER 75 YEARS.**

CALL ONE OF OUR EXPERIENCED AGENTS TODAY!
608-754-2121 shorewest.com



SCAN HERE
TO GET AN
INSTANT
HOME VALUE
ESTIMATE

If you'd like a career with unlimited earning potential and flexibility, go to joinshorewest.com or call us.

JANESVILLE/ROCK COUNTY OFFICE

608-754-2121

4323 Milton Avenue, Suite 200, Janesville



WISCONSIN MORTGAGE
CORPORATION
NMLS# 280412

ShoreWEST
REALTORS®

EHO EOE EHL